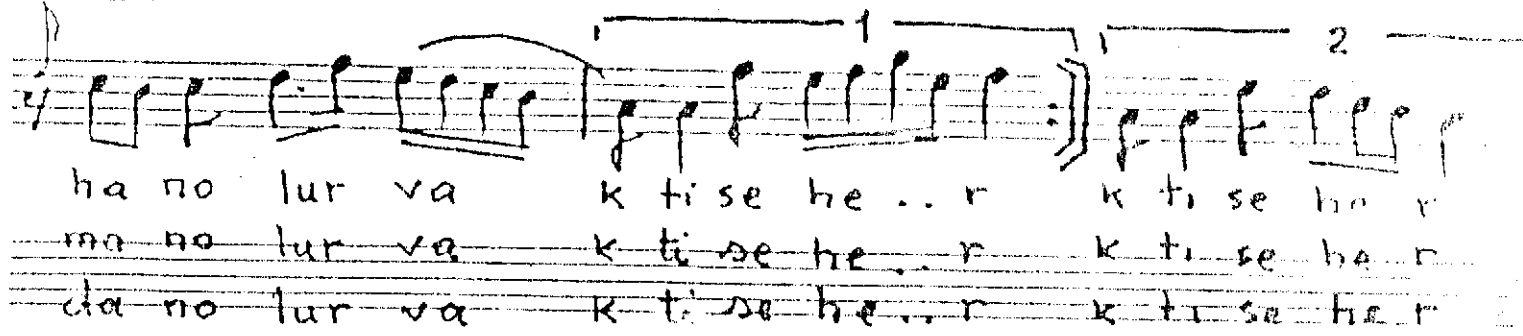
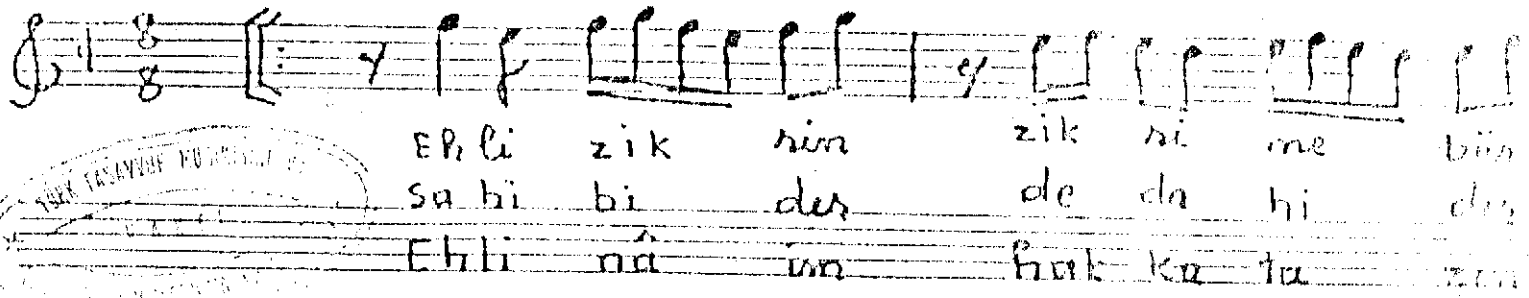


Gülte: Sayh Fahrreddin ef. yül. Cerrâhi k.s.
Beyân. Nâhu

Selâhaddin Dîvânî
(Salâhi' dale)

8.

1



5-1-937
Nolaya aland
xarid

Ehl-i zikrin zikrine burhan olur vakt-i seher
Sahib-i derde daki derman olur vakt-i seher
Halka-i tevhiide bulur nâim olma Fahri ya
Ehl-i naim Hakka tâ zindan olur vakt-i ..

Bestekâr undan gâilâ

imethode